

6.1 .1 The governance of the institution is reflective of and in tune with the vision and mission of the institution

Our Vision:

Our vision is to impart vibrant, innovative and global education and to make IMS the world leader in terms of excellence of education, research and to serve the nation in the 21st century.

Our Mission:

- To develop IMSEC as a centre of Excellence in Technical and Management education.
- To inculcate in its students the qualities of Leadership, Professionalism, Executive competence and corporate understanding.
- To imbibe and enhance Human Values, Ethics and Morals in our students.
- To transform students into Globally Competitive professionals.

IMS Engineering College, established in the year 2002, has a broad Vision and Mission that focuses on innovative approach for quality teaching and research in engineering and management so as to bridge the gap between the industry, society and academia. The institute follows a democratic and participatory approach of governance for achieving its goals. All stakeholders participate actively in the administration of institute. The college has a well-structured administrative and academic setup to consistently improve the quality and standard of education transmitted and to achieve excellence.

Administrative Setup:

▪ *Management*

IMS Engineering College is managed under IMS Society. The society has its Governing and Executive council which takes care of the proper functioning of the institute. The council primarily takes care of strategic issues and provides advice on policy matters and contributes to the college-wide planning process.

The details about IMS Society can found at the link :<http://imsec.ac.in/about/imsec-society>

The list of the members of executive council are enlisted here in this link: <http://imsec.ac.in/about/executive-council> and governing council of the college is given in the following link :<http://imsec.ac.in/about/governing-council>

- ***The Chairman***

The Chairman is the head of IMS group of colleges and looks after the proper functioning of all the colleges under IMS group. Refer the link :<http://imsec.ac.in/about/chairman>

- ***Director***

The Director is the head of the institute and looks after all the administrative and academic activities. He is responsible for academic planning, its implementation and stream lining of the academic processes. The Director ensures that regular day to day operations are properly conducted through various monitoring mechanisms. Refer the link: <http://imsec.ac.in/about/director>

- ***Registrar***

The Registrar works under the guidance of the Director and looks after the proper execution of academic and administrative matters like the enrolment of students, maintaining student records, keeping permanent record of marks and other university related work.

Academic Setup:

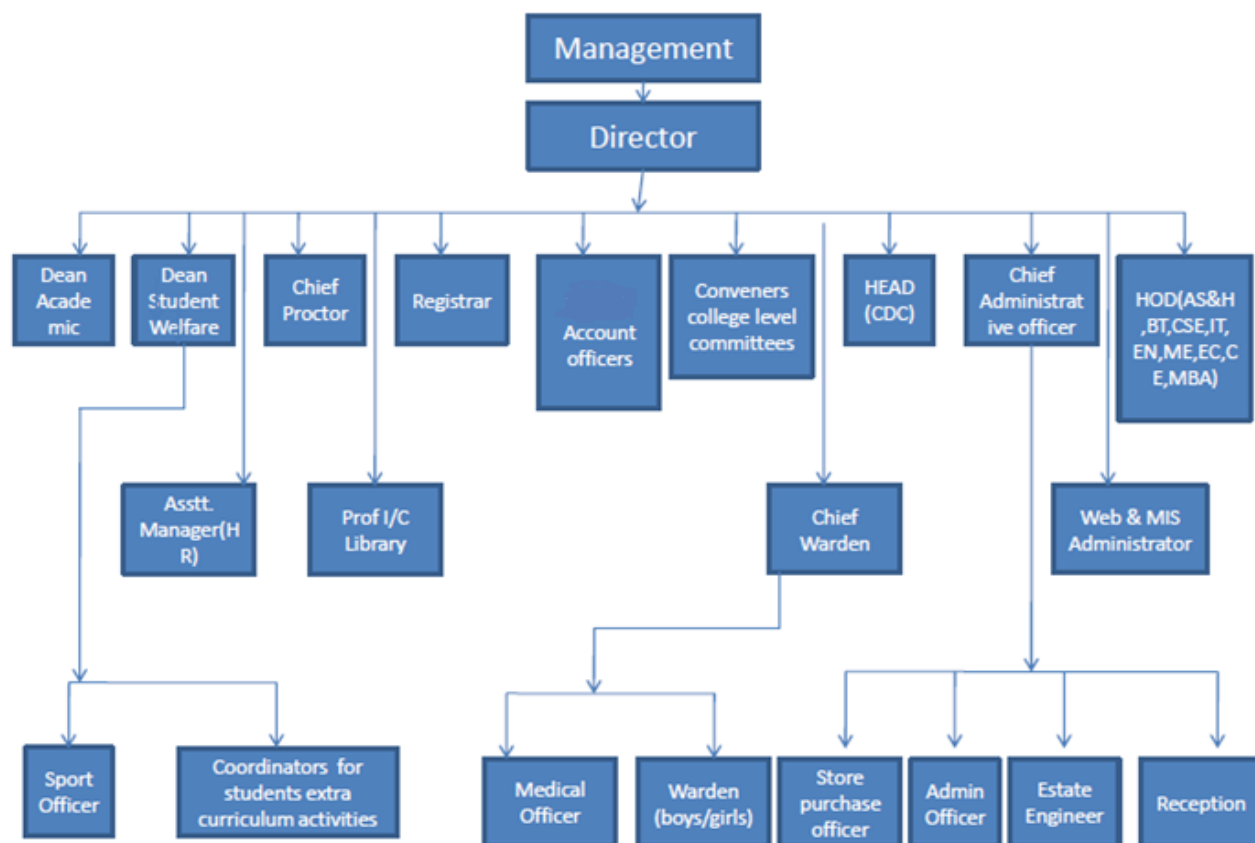
- **Academic-Dean**

Academic Dean is the highest-ranking academic official in the institution, next to the Director. The Dean provides strategic direction and academic leadership through planning to achieve the highest standards of education in management and engineering courses.

- **Head of Departments**

Head of Department supervise, manage and provide a direction to the department so as to ensure the achievement of the highest possible standards of excellence in all its activities. They are supported by faculty and staff members. Heads of Departments exercise leadership skills demonstrate vision and empower others in order to deliver the agreed departmental strategy required for achieving the desired goals.

Organization Structure:



The policy statements and action plans: The management and Director ensures that the policy statements and action plans are aligned for attaining the mission of institute, disseminates the vision and mission to all stake holders and involve them in forming the policy statements. The Director makes action plans in consultation with faculty members to review of outcomes from the implementation of action plans through meetings with functional committees and makes necessary changes in action plans if required. The management takes review of quality policies and makes amendments in quality policies if required.

Formulation of action plans: The action plans are formulated in line with quality policy under the leadership of the Director and the same are incorporated into strategic plans for effective implementation.

Interaction with stakeholders: The Director ensure that all stakeholders are involved in different activities.

Proper support for policy and planning: The requirements of the society for policy making and planning are collected by the Director through interaction with various stakeholders.

Reinforcing the culture of excellence: For the reinforcement of cultural excellence the vision, mission, short term and long term goals, quality policies are kept wide open to all stakeholders for their suggestions, necessary training is provided to its faculty and supporting staff for their development and motivates the team building and team work to create healthy work culture